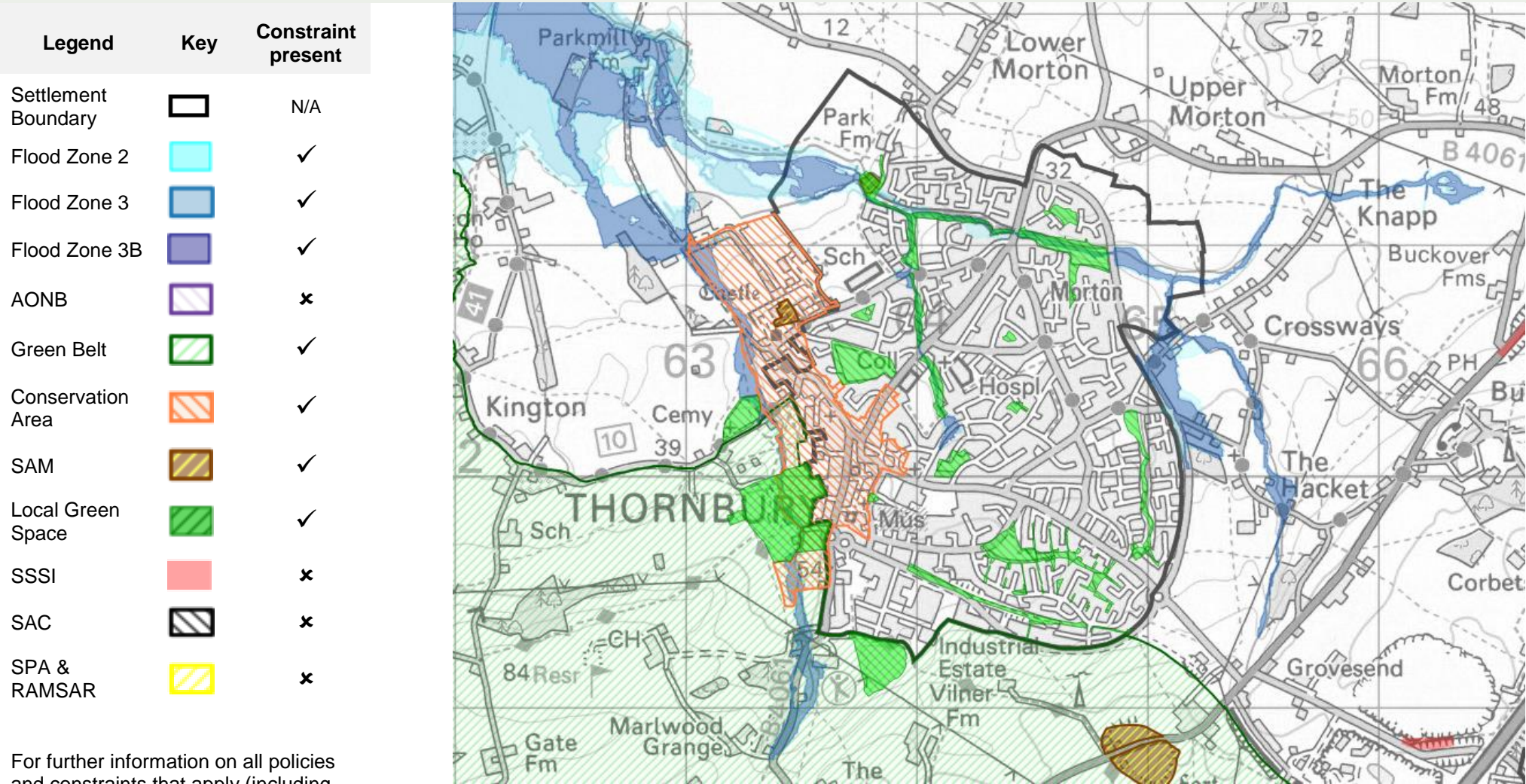


# THORNBURY DATA & ACCESS PROFILE

Thornbury is located approximately 14 miles north of central Bristol and 6 miles north of the urban edge at Bradley Stoke.

## PLANNING CONSTRAINTS MAP



© Crown copyright and database right 2020 OS 100023410

For further information on all policies and constraints that apply (including listed buildings) please see the online [adopted policies map](#).

## KEY DEMOGRAPHIC STATISTICS

### POPULATION & HOUSEHOLD – VILLAGE LEVEL

	Population				
	Total	0-4	5-15	16-64	65+
<b>2011 Census</b>	11,475	530	1,490	7,023	2,431
<b>2018 MYE</b>	12,199	644	1,569	6,849	3,137
<b>% change 2011 to 2018</b>	6%	21%	5%	-2%	29%

Households 2011 Census	Additional dwellings completed since 2011*
4,960	808

\*Based on residential land survey data

### 2011 CENSUS ECONOMIC ACTIVITY – VILLAGE LEVEL

	Economically Active	No. Unemployed	% Unemployed
<b>Thornbury</b>	5,822	213	3.7%
<b>South Gloucestershire Total</b>	143,198	5,354	3.7%

### 2011 CENSUS COMMUTER FLOWS – WIDER COMMUNITY AREAS

The following section presents a summary of the commuter flows data for the wider area in which the village is located - based on aggregations of Census Output Areas (COAs). The number of 'resident workers' and 'workplace jobs' are identified and shown below. Key flows between areas are also identified - generally where flows are in excess of 5%.

Jobs	Workers	Job/Worker Ratio
5,915	5,904	1.0

#### According to Census travel to work data for the wider Thornbury area:

There were around 5,900 'working residents' living in the area. Of these:

- 26 % work within the area with a further 16% working from home or with no fixed workplace (i.e. itinerant workers)
- 15 % work within Bristol
- 9% work elsewhere (i.e. Beyond the West of England / neighbouring authority areas)
- 4% work within Stoke Gifford & Harry Stoke

There were around 5,900 'workplace jobs' within the area, of these:

- 26% were occupied by residents of Thornbury
- 14% were occupied by residents of Bristol
- 9% were occupied by residents of local authorities beyond the West of England or neighbouring areas.

# APPROVED PLANNING PERMISSIONS

## NEW HOMES

There are a number of approved planning applications for new homes still to be developed in the area.

	Number of sites with granted planning permission	Number of units with granted planning permission (net)
Large Sites (10 units+)	7	680
Small Sites (1 – 9 units),	17	21
<b>TOTAL</b>	<b>24</b>	<b>701</b>

## EMPLOYMENT, RETAIL, LEISURE, COMMUNITY & EDUCATION

The table below outlines the floorspace gains and losses within the settlement limits still to be implemented.

Floorspace gained (sqm):	Floorspace lost (sqm):
2,623	-705

## APPROVED PERMISSIONS TO BE DEVELOPED

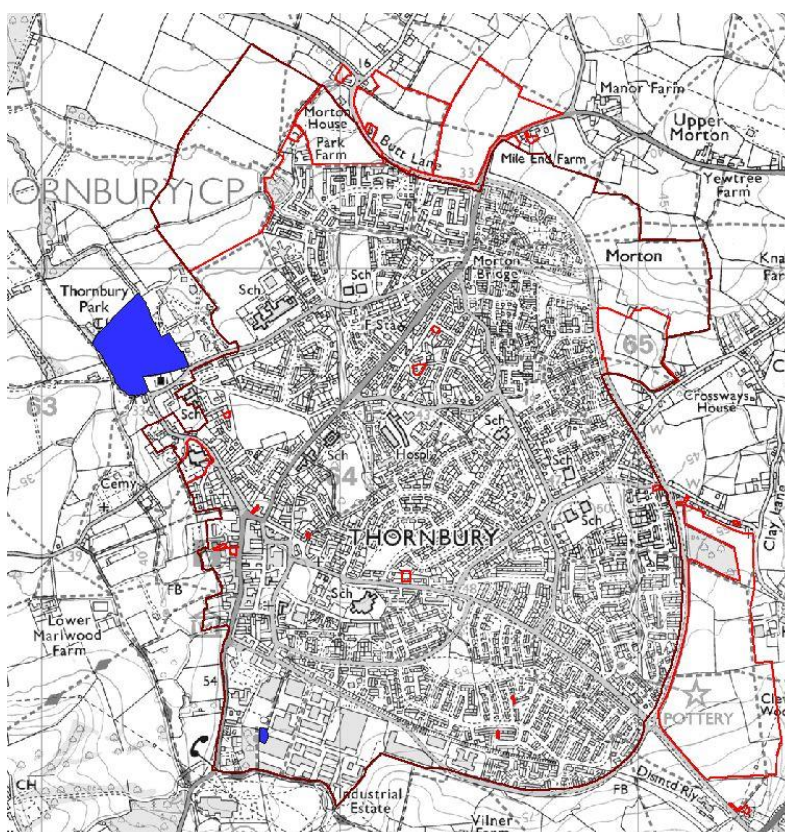
Residential Permissions Still To Be Developed (Up To August 2020)



Non-Residential Permissions Still to Be Developed (Up To March 2020)



Settlement Boundary (Adopted Policy CS5)



For further details on approved planning applications to be developed, please visit

<https://developments.southglos.gov.uk/online-applications/spatialDisplay.do?action=display&searchType=Application>

# ACCESSIBILITY TO SERVICES AND FACILITIES

## PUBLIC TRANSPORT: BUS SERVICES

The table below indicates where a destination can be reached by bus that meets the minimum criteria, as set out in policy PSP11: Transport Impact Management. Where a destination can be reached by bus (that meets the minimum criteria) we have indicated the average travel times.

For further information, please see the methodology.

	Weekday	Weekend
	<b>Minimum Criteria: Within an hour, 5 times a day (with return journey). Arrive by 9am, depart after 5pm.</b>	
Bristol City Centre		
Bradley Stoke		
Emersons Green		
Filton		
Kingswood		
Aztec West		
Staple Hill		
Thornbury		
Yate		
Cribbs Causeway		
Longwell Green		
Bath City Centre		
Keynsham		
Wotton-Under-Edge		

**Key:**  
**Average Travel Time (minutes)**

- 0-15
- 16-30
- 31-45
- 46-60
- minimum criteria not met:

The information above has been obtained from [Traveline](#) and is accurate as of March 2020.

## PUBLIC TRANSPORT: TRAIN SERVICES

- There are no train stations in Thornbury.
- There are no train stations within 2km of Thornbury.

**COMMUNITY FACILITIES**

Facility	Walking & Cycling Distance	Number within Catchment
Dedicated Community Centre	800m	3
Library		1
Post Office		1
Public House		7

**HEALTH FACILITIES**

Facility	Walking & Cycling Distance	Number within Catchment
GP Surgery	800m	3
Pharmacy		3
Dentists		2

**RETAIL AND FOOD FACILITIES**

Facility	Walking & Cycling Distance	Number within Catchment
Comparison Retail Store <sup>1</sup>	1200m	N/A – has town centre
Designated Town Centre		1
Superstore or Supermarket		2
Convenience Store <sup>2</sup>		5

**ACCESS TO MAJOR EMPLOYERS**

Facility	Walking & Cycling Distance	Number within Catchment
Town Centres	2000m	1
Major Employers		3
Safeguarded Employment Areas		1

**EDUCATION FACILITIES**

Facility	Walking & Cycling Distance	Number within Catchment
Primary School	2 Miles	7
Secondary School	3 Miles	2

**SUPERFAST BROADBAND ACCESS**

Facility	Yes/No
Superfast Broadband	Yes

<sup>1</sup> Comparison Retail Store = Shop, selling goods and service other than food e.g. hairdresser, garage

<sup>2</sup> Convenience Store = Smaller shop selling everyday basic food and drink items e.g. bread, milk.

# MAPS OF THORNBURY

## HEALTH AND COMMUNITY (800M), RETAIL (1200M) AND EMPLOYMENT (2000M)

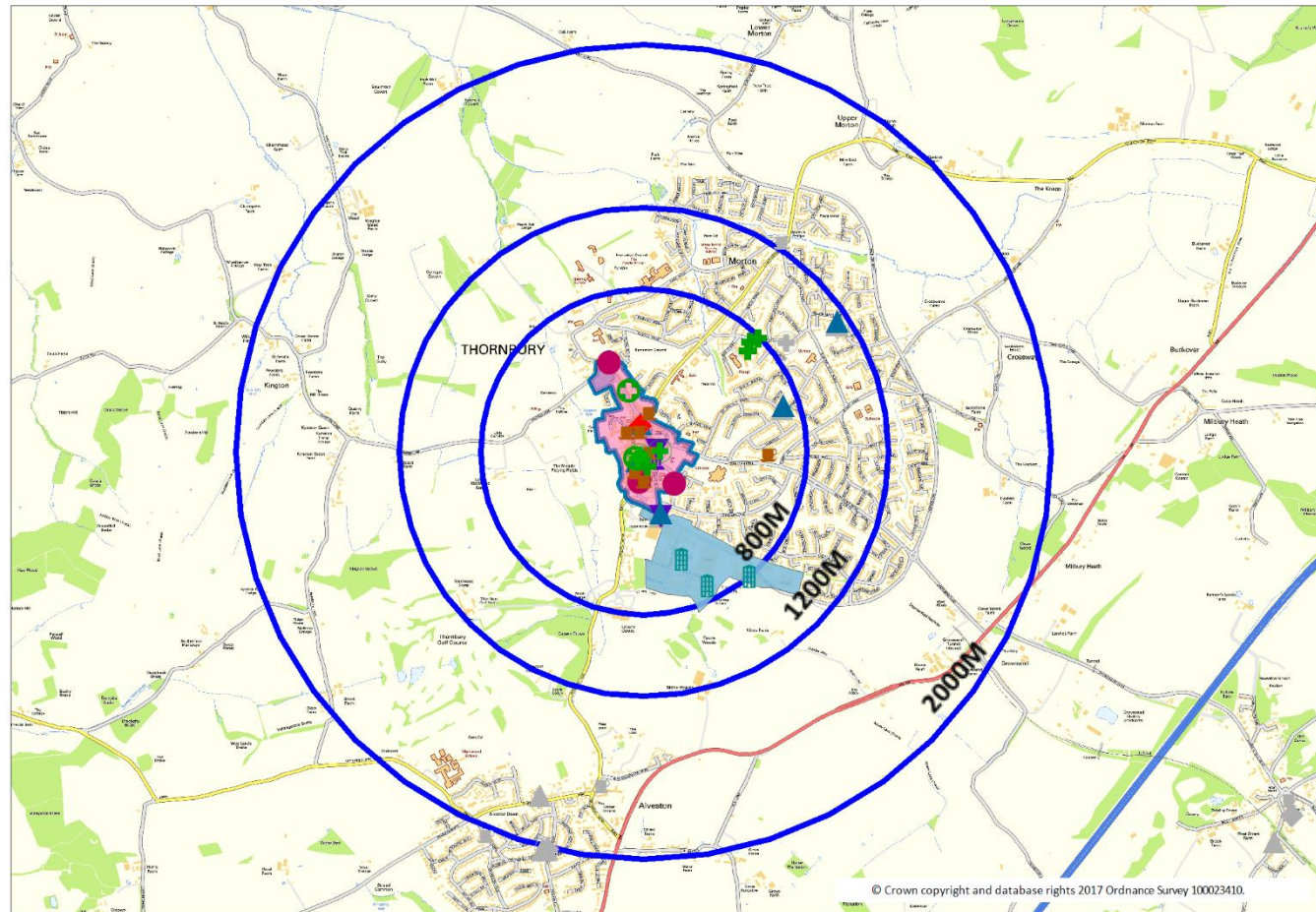
The map to the right shows three separate walking and cycling distances (800m, 1200m and 2000m) represented by blue rings.

The key shows the relevant facilities within their catchment areas.

Grey facilities on the map indicate those within the area but outside their relevant catchment e.g. Community Centre outside of 800m.

Grey facilities shown within their respective catchments indicate that they are not considered accessible due to issues of walking/cycling route quality and safety.

Facilities shown in colour represent those considered to be within walking and cycling distance of the centre of the settlement.



### 800M

- Community Centre (Red circle)
- Dentist (Green circle with cross)
- GP Surgery (Green cross)
- Health Centre (Green cross)
- Library (Purple building icon)
- Public House (Brown building icon)
- Post Office (Red diamond)
- Pharmacy (Green circle with cross)

### 1200M

- Local Convenience (Blue triangle)
- Supermarket (Purple triangle)
- Town Centre Retail (Pink square)

### 2000M

- Major Employer (Blue building icon)
- Safe Guarded Employment (Light blue square)
- Town Centre Employment (Blue square)

## PRIMARY SCHOOLS (2 MILES) AND SECONDARY SCHOOLS (3 MILES)

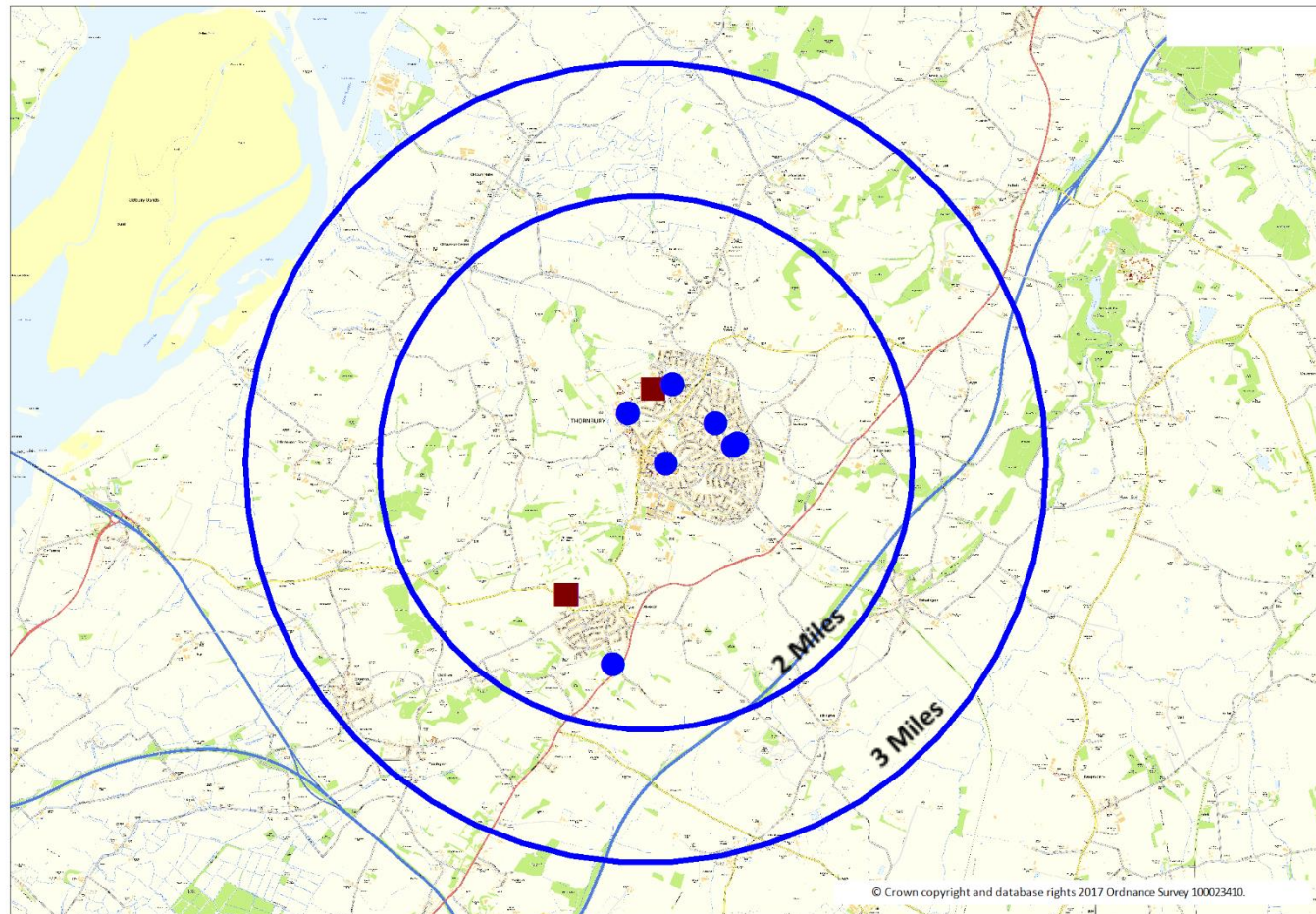
The map to the right shows two separate walking and cycling distances (two miles and three miles) represented by blue rings.

The key shows the relevant facilities within their catchment areas.

Grey facilities on the map indicate those within the area but outside their relevant catchment e.g. Primary School outside of two miles.

Grey facilities shown within their respective catchments also indicate that they are not considered accessible due to issues of walking/cycling route quality and safety.

Facilities shown in colour represent those considered to be within walking and cycling distance of the centre of the settlement.



### 2 MILES

Primary School



### 3 MILES

Secondary School



## APPENDIX OF SERVICES AND FACILITIES

Facility Type	Catchment	Name	Address	Post Code
Community Centre	800m	Turnberries Community Building	Bath Road, Thornbury,	BS35 2BB
		The Chantry	52 Castle Street, Thornbury	BS35 1HB
		The Armstrong Hall Complex	Chapel Street	BS35 2BJ
Library	800m	Thornbury Library	St Mary Street	BS35 2AA
Post Office	800m	Thornbury Post Office	9 High Street	BS352AE
Public House	800m	The Black Horse	Gillingstool	BS35 2EH
		The White Lion	High street	BS35 2AQ
		Swan Inn	14 Gloucester Road	BS35 2AE
		The Malthouse	59 High Street	BS35 2AP
		The Wheatsheaf	Chapel Street	BS35 2BJ
		Hawkes House	St Mary Street	BS35 2AB
		The Royal George	7 The Plain	BS35 2AG
Dentist	800m	Bank Cottage Dental Practice	14 Castle Street	BS35 1HB
		High Street Dental Practice	46 High Street	BS35 2AN
GP Surgeries	800m	Streamside Surgery	Thornbury Health Centre Eastland Road	BS351DP
		St Marys Street Surgery	24 St Mary Street	BS352AT
Health Centre	800m	Thornbury Health Centre	Eastland Road	BS35 1DP
Pharmacy	800m	Lloyds Pharmacy Ltd	8-10 Horseshoe Lane	BS35 2AZ
		Boots UK Ltd	43 High Street	BS35 2AR
		Lloyds Pharmacy Ltd	47 High Street	BS35 2AR
Designated Town Centre (Retail)	1200m	Thornbury Town Centre		
Supermarkets	1200m	Tesco Stores Limited	Midland Way	BS35 2BS
		Aldi Stores Ltd	St Marys Centre Horseshoe Lane	BS35 2AZ
	1200m	Co-op Welcome	9 High Street	BS35 2AE



Facility Type	Catchment	Name	Address	Post Code
<b>Local Convenience</b>		McColls	37 Oakleaze Road	BS35 2LW
		One Stop	38 Primrose Drive	BS35 1UP
		Riddifords	51 High Street	BS35 2AR
		Tesco Petrol Station	Midland Way	BS35 2BS
<b>Major Employer</b>	<b>2000m</b>	Essilor Ltd	Cooper Road	BS35 3UW
		Europa Group Ltd	Europa House Midland Way	BS35 2JX
		GIST	Short Way	BS35 3UT
<b>Safeguarded Employment Area</b>	<b>2000m</b>	Thornbury Industrial Estate		
<b>Designated Town Centre (Employment)</b>	<b>2000m</b>	Thornbury Town Centre		
<b>Primary School</b>	<b>2 Miles</b>	Gillingstool Primary School	Gillingstool	BS35 2EG
		Manorbrook Primary School	Park Road	BS35 1JW
		St Helen's CE VC Primary School	Greenhill	BS35 2QX
		St Mary's CE VA Primary School - Thornbury	Church Road	BS35 1HJ
		Christ The King RC VA Primary School	Easton Hill Road	BS35 1AW
		Crossways Infant School	Knapp Road	BS35 2HQ
		Crossways Junior School	Knapp Road	BS35 2HQ
<b>Secondary School</b>	<b>3 Miles</b>	Castle Secondary School	Park Road	BS35 1HT
		Marlwood Secondary School	Vattingstone Lane	BS35 3LA