




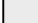

Scale for planning purposes only

Revision	Date	Drm	Ckd
L Additional Translocated Hedge	19.12.19	AT	AT

PARAMETERS

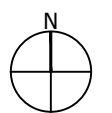
-  Site Boundary
-  Amenity Public Open Space
(including, as required: access, play facilities, drainage, landscaping, amenity grassland, retained vegetation, pedestrian/cycle links, and all necessary infrastructure)
-  Flexible Land Use Boundary
(Land use boundary deviation is permitted by a limit of 5m)
-  Existing Trees and hedgerows to be retained
-  Veteran Tree to be retained
-  Existing Trees and hedgerows to be removed as required
-  Zone where hedgerow removal is permitted to enable access
-  Woodland Structure Planting
-  Zone for New Allotments
-  Existing retained Water Course
-  Existing footpath (PROW) to be retained
-  Proposed wildlife pond
-  Translocated hedgerow or new hedgerow
-  Zone for parkland with meadow grassland and dispersed tree planting
-  Zone for SUDS Basins with wet grassland
-  Indicative Alignment of Primary Street
(Exact alignment to be determined at reserved matters stage)
-  Indicative Alignment of Pedestrian, Cycle and Bus Access
(Sustainable Travel link - exact alignment to be determined at reserved matters stage)

PARK FARM DEVELOPMENT

-  Park Farm Boundary
-  Indicative Development Area (Under Construction)
-  Main Street Alignment



Project
**Pickedmoor
Thornbury**



Drawing Title
**Parameter Plan
Green Infrastructure**

Date 05.06.18	Scale 1:5000@A3	Drawn by KT	Check by AT
Project No 27982	Drawing No 9604	Revision L	



Planning • Master Planning & Urban Design • Architecture •
Landscape Planning & Design • Environmental Planning • Graphic
Communication • Public Engagement • Development Economics

bartonwillmore.co.uk 