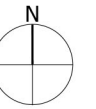


Scale for planning purposes only

Revision
L Scale wording updated

Date 20.12.19
Drn KU
Ckd AT



- Site Boundary
- Potential Vehicle Access Point
- Pedestrian Access Point
- Potential sustainable transport connection (pedestrian, cycle & bus)
- Flood Zones 2 & 3
- Public Rights of Way
- Indicative Location of oil pipeline (inc. 3m easement)
- Existing Foul sewer (inc. 6m easement)
- Proposed Foul sewer (7.5m easement)
- Watercourses
- Potential tree planting
- Park Farm Development
- Park Mill Convert SNCI including Ancient Woodland (inc. 15m offset)
- Hedgerow
- Semi-natural Broadleaf Woodland (priority habitat)
- Badger Set with 20m offset
- Existing pond with 10m offset
- Potential Drainage Area
- Existing Drainage Area

Tree Survey :

- Category A
 - Category B
 - Category C
 - Category U
-

NOTE: tree locations are approximate

Project

NW Thornbury

Drawing Title

Constraints & Opportunities

Date
08.12.17

Scale
1:5000@A3

Drawn by
PT

Check by
GR

Project No
27982

Drawing No
9101

Revision
L

DRAFT **BARTON WILLMORE**

Planning • Master Planning & Urban Design • Architecture •
Landscape Planning & Design • Environmental Planning • Graphic
Communication • Public Engagement • Development Economics

bartonwillmore.co.uk



Offices at Birmingham Bristol Cambridge Cardiff Ebbsfleet Edinburgh
Glasgow Leeds London Manchester Newcastle Reading Southampton